



# HEAVY DUTY AIR DRYER

WAD HD SERIES

**RISHENG®**

# AIR DRYER

## HEAVY DUTY SERIES (230-2578 CFM)

### WAD HD Series

Westair Pneumatic Systems and Risheng are pleased to introduce their latest range of WAD-HD Series refrigerated air dryers engineered for heavy duty applications.

#### TECHNICAL SPECIFICATION:

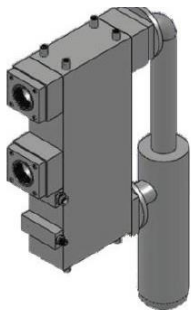
- Capacity range: 230-2578 CFM
- Working pressure :  $\leq 1.5$  MPa (15 bar)
- Max. inlet temperature: 60°C
- Max. ambient temperature: 50°C
- Min. ambient temperature: 5°C
- Cooling type: air
- Power supply: 240V/1Ph/50Hz (WAD-60-HD – WAD-150-HD)
- Power supply: 415V/3Ph/50Hz (WAD-200-HD – WAD-700-HD)
- Refrigerant: R407C

#### RATED CONDITIONS:

- Working pressure: 0.7 MPa
- Inlet temperature: 38°C
- Ambient temperature: 38°C
- PDP: 2-5°C



## KEY FEATURES



#### • WORLD RENOWNED PARTS

The WAD-HD series uses the best quality components possible within the refrigeration dryer. The main pumps used are Sanyo, which are made in Japan. Other top quality brands include Danfoss, Schneider Electric and Siemens.

#### • ALUMINIUM HEAT EXCHANGER

The heat exchanger uses advanced European structural plate-fin design to maximise heat efficiency. Manufactured from thickened aluminium, the heat exchanger reduces corrosion and prevents contamination in the air pipe.

#### • OUTSTANDING DESIGN

The heavy duty range adopts an all-in-one modular structural design, making it user friendly and very compact.








- **ENERGY SAVING AND ENVIRONMENTALLY FRIENDLY**

The HD Series is well renowned for being energy efficient and environmentally friendly. The inlet and outlet temperature of the pre-cooler is 5-7°C, making it significantly better than that of similar products. The outlet compressed air humidity is relatively low, which prevents condensation in the air pipe. The pre-cooler reclaims nearly 90% of compressed air, which in turn reduces power consumption and evaporation load.

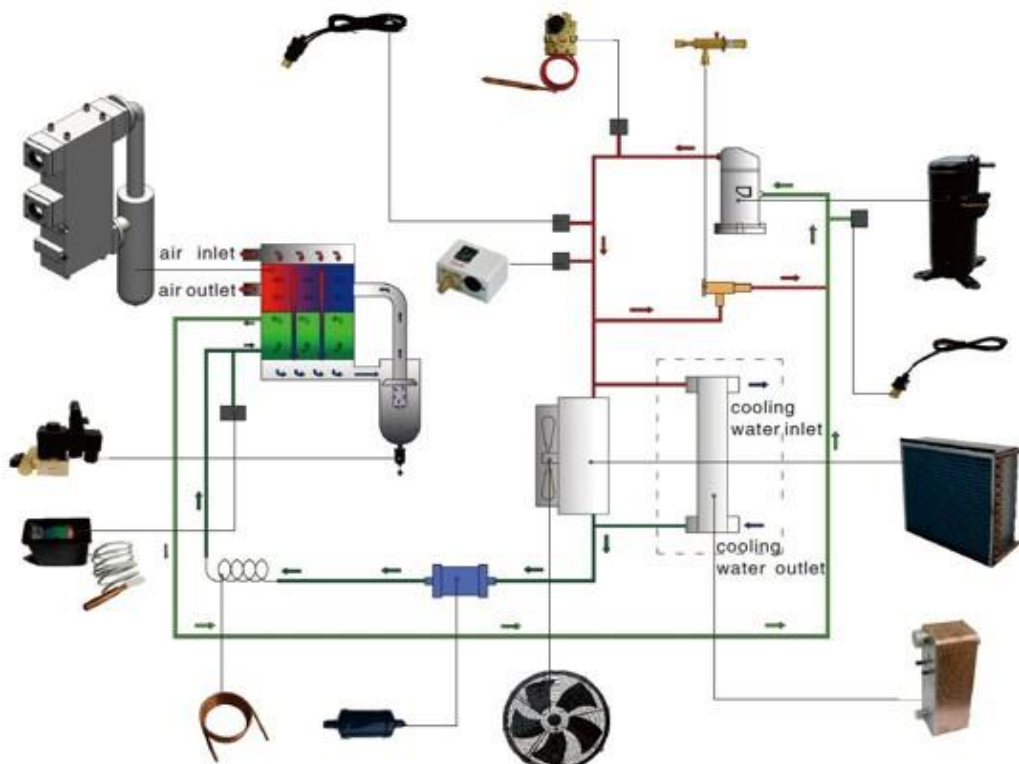
- **SECURITY AND RELIABILITY**

The WAD-HD Series is awarded with the newest CE Certification by the European Union. All WAD-HD dryers are fitted with a fault alarm indicator and multiple overload shut down protection for optimum safety. The HD Series are equipped with world renowned parts, which are known for their reliability and performance.

- **CONTROLLER OPTIONS**

Standard models come with a fault alarm indicator control system. Available on request we can offer either SMC or Siemens PLC / touch screen controllers. These options can support RS485 I/O, Profibus protocol, Modbus protocol and Ethernet.

## WAD-HD SERIES FLOWCHART



## WAD-HD SERIES MODELS

MODEL	M <sup>3</sup> /MIN	CFM	POWER SUPPLY (V/Ph/Hz)	NOMINAL POWER (kW)	OUTLET SIZE	DRAIN (mm)	DIMENSIONS (mm) (L x W x H)	WEIGHT (KG)
WAD-60-HD	6.5	230	240/1/50	1.40	Rc 1-1/2"	ø10	750 x 550 x 880	78
WAD-80-HD	8.8	311		1.85				80
WAD-100-HD	11.0	388		2.30	85			
WAD-120-HD	13.0	459		3.03	Rc 2"		1000 x 670 x 1030	130
WAD-150-HD	17.0	600		3.10				140
WAD-200-HD	22.0	777	415/3/50	3.63	Rc 2-1/2"		1000 x 820 x 1600	150
WAD-250-HD	27.0	953		4.40				250
WAD-300-HD	33.0	1165		5.10			260	
WAD-350-HD	37.0	1307		6.13	DN 100		1150 x 1120 x 1750	270
WAD-400-HD	45.0	1589		6.90				500
WAD-500-HD	55.0	1942		8.34	510			
WAD-600-HD	65.0	2295		9.81	DN 125	550		
WAD-700-HD	73.0	2578		580				



**COMPRESSOR TECHNOLOGY QLD**

23 -27 Victor Street

Boronia Heights

QLD 4124

Ph: (07) 3133 3527

Email: [sales@ctqgroup.com.au](mailto:sales@ctqgroup.com.au)

[www.ctqgroup.com.au](http://www.ctqgroup.com.au)